




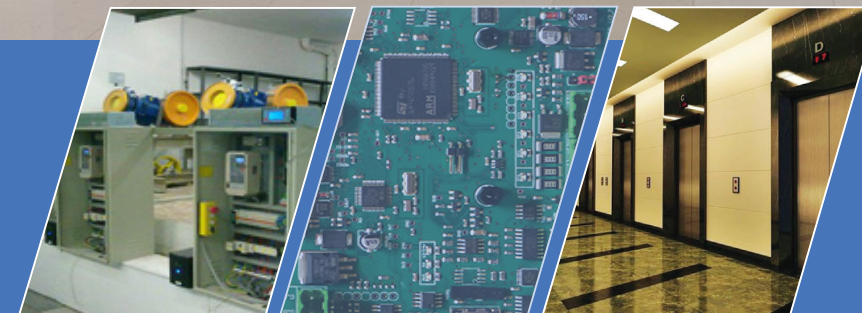
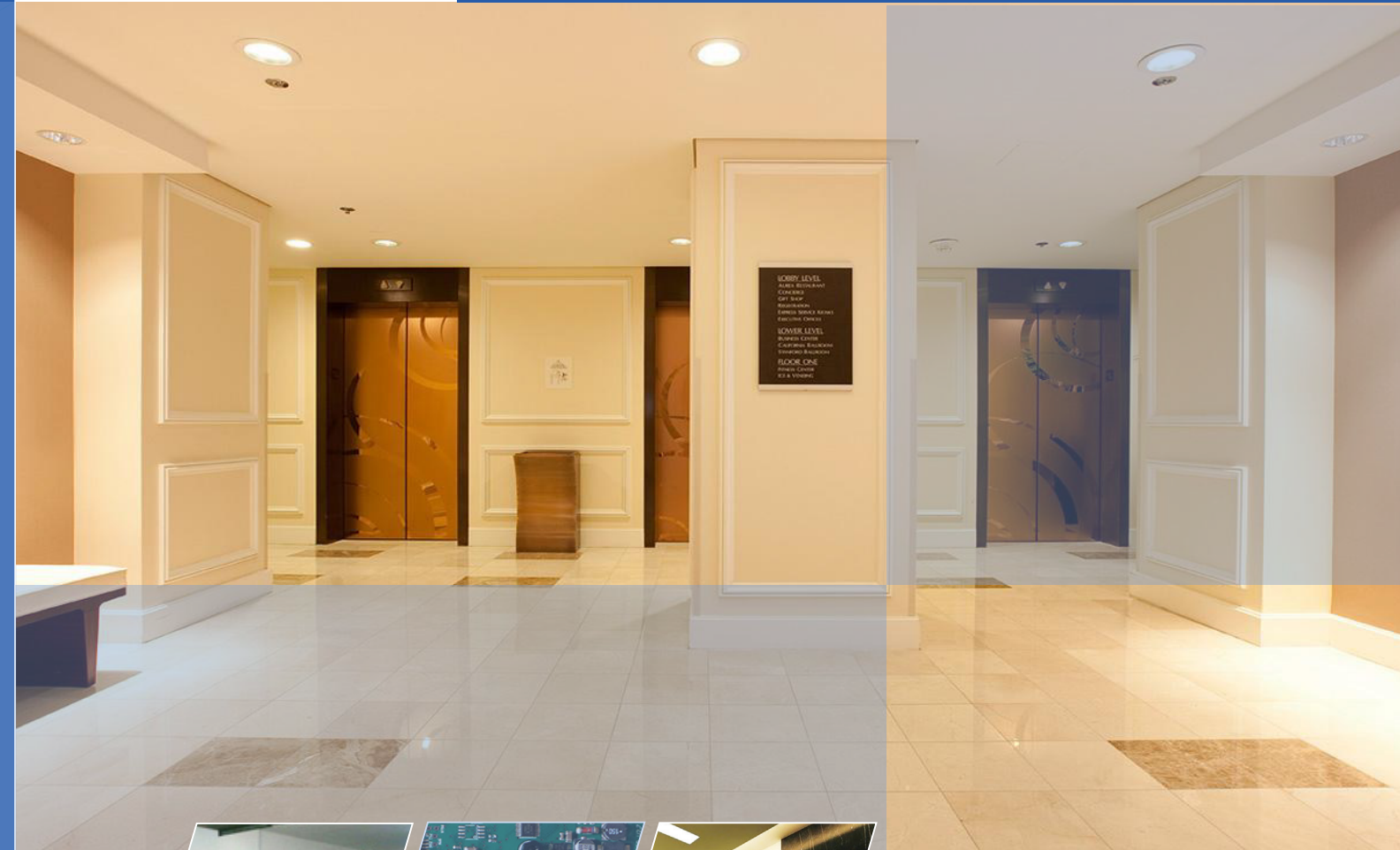




**CÔNG TY TNHH SẢN XUẤT
THANG MÁY SMARTRISE VIỆT NAM**

**CÔNG TY TNHH SẢN XUẤT
THANG MÁY SMARTRISE VIỆT NAM**

-  Số 8 BT2, ngõ 66 đường Kim Giang, P. Đại Kim, Q. Hoàng Mai, Hà Nội
-  (046) 266 7555
-  Nhà máy: Đường D2-1, KCN Đại Đồng, Hòa Sơn, Tiên Du, Bắc Ninh
-  kinhdoanh@smartrise.vn
-  www.smartrise.vn





NỘI DUNG

04	CABIN THANG MÁY
08	CỬA TẦNG THANG MÁY
10	ĐỘNG CƠ MONTANARY
12	ĐỘNG CƠ KDS
14	ĐỘNG CƠ TORIN
17	ĐỘNG CƠ MITSUBISHI
18	ĐỘNG CƠ GEM
19	ĐỘNG CƠ OTIS
21	HỆ ĐIỀU KHIỂN VÀ BIẾN TẦN
22	TRẦN CABIN, TAY VỊN
23	SÀN CABIN
24	HỘP GỌI THANG
26	THANG MÁY TẢI HÀNG
28	THANG MÁY TẢI THỰC PHẨM

CABIN THANG MÁY

MODEL SMEV/CB04

- ▲ Vách Cabin: Inox sọc nhuyền và đá 3D
- ▲ Độ dày : 1 mm
- ▲ Trần Cabin : Inox gương và Mica
- ▲ Sàn : Đá Granrit
- ▲ Tay vịn : Inox



MODEL SMEV/CB05

- ▲ Vách Cabin: Inox sọc nhuyền và đá 3D
- ▲ Độ dày : 1 mm
- ▲ Trần Cabin : Inox gương và Mica
- ▲ Sàn : Đá Granrit
- ▲ Tay vịn : Inox



CABIN THANG MÁY

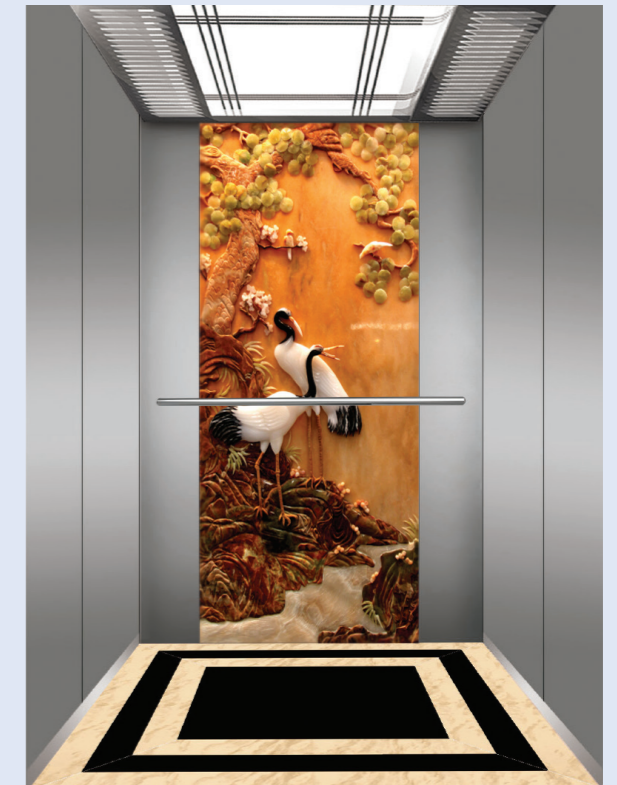
MODEL SMEV/CB06

- ▲ Vách Cabin: Inox sọc nhuyền và đá 3D
- ▲ Độ dày : 1 mm
- ▲ Trần Cabin : Inox gương và Mica
- ▲ Sàn : Đá Granrit
- ▲ Tay vịn : Inox



MODEL SMEV/CB07

- ▲ Vách Cabin: Inox sọc nhuyền và đá 3D
- ▲ Độ dày : 1 mm
- ▲ Trần Cabin : Inox gương và Mica
- ▲ Sàn : Đá Granrit
- ▲ Tay vịn : Inox



CABIN THANG MÁY

MODEL SMEV/CB08

- ▲ Vách Cabin: Inox sọc nhuyền và đá 3D
- ▲ Độ dày : 1 mm
- ▲ Trần Cabin : Inox gương và Mica
- ▲ Sàn : Đá Granrit
- ▲ Tay vịn : Inox



MODEL SMEV/CB09

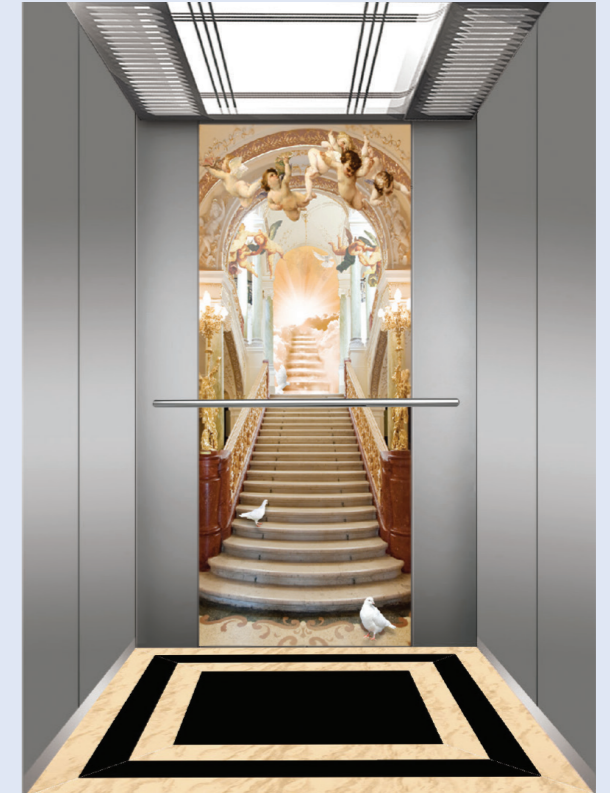
- ▲ Vách Cabin: Inox sọc nhuyền và đá 3D
- ▲ Độ dày : 1 mm
- ▲ Trần Cabin : Inox gương và Mica
- ▲ Sàn : Đá Granrit
- ▲ Tay vịn : Inox



CABIN THANG MÁY

MODEL SMEV/CB10

- ▲ Vách Cabin: Inox sọc nhuyền và đá 3D
- ▲ Độ dày : 1 mm
- ▲ Trần Cabin : Inox gương và Mica
- ▲ Sàn : Đá Granrit
- ▲ Tay vịn : Inox



MODEL SMEV/CB11

- ▲ Vách Cabin: Inox sọc nhuyền và đá 3D
- ▲ Độ dày : 1 mm
- ▲ Trần Cabin : Inox gương và Mica
- ▲ Sàn : Đá Granrit
- ▲ Tay vịn : Inox



CABIN THANG MÁY

MODEL SMEV/CB12

- ▲ Vách Cabin: Inox sọc nhuyền
- ▲ Độ dày : 1 mm
- ▲ Trần Cabin : Inox gương và Mica
- ▲ Sàn : Đá Granrit
- ▲ Tay vịn : Inox



MODEL SMEV/CB13

- ▲ Vách Cabin: Inox gương
- ▲ Độ dày : 1 mm
- ▲ Trần Cabin : Inox gương và Mica
- ▲ Sàn : Đá Granrit
- ▲ Tay vịn : Inox



CABIN THANG MÁY

MODEL SMEV/CB14

- ▲ Vách Cabin: Inox sọc nhuyền xen inox gương
- ▲ Độ dày : 1 mm
- ▲ Trần Cabin : Inox gương và Mica
- ▲ Sàn : Đá Granrit
- ▲ Tay vịn : Inox



MODEL SMEV/CB15

- ▲ Vách Cabin: Inox sọc nhuyền gold xen inox gương
- ▲ Độ dày : 1 mm
- ▲ Trần Cabin : Inox gương và Mica
- ▲ Sàn : Đá Granrit
- ▲ Tay vịn : Inox



CỬA TẦNG THANG MÁY



KHUNG BAO BẮN HẸP



KHUNG BAO BẮN RỘNG



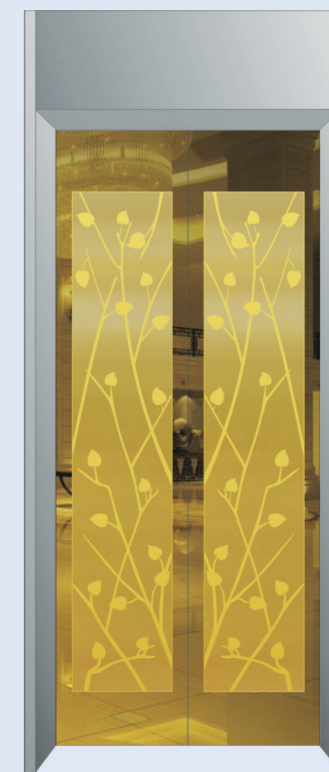
CỬA TẦNG THANG MÁY



MODEL SMEV/CT04



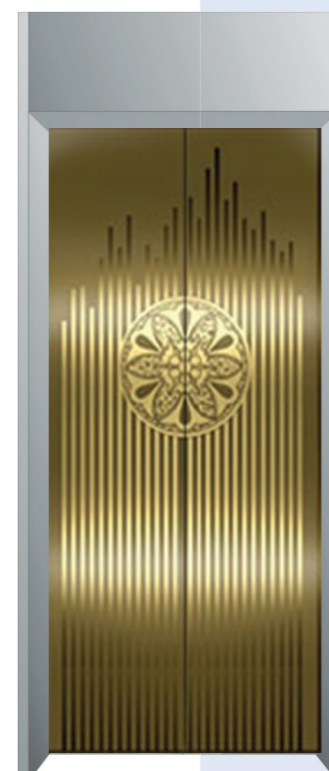
MODEL SMEV/CT05



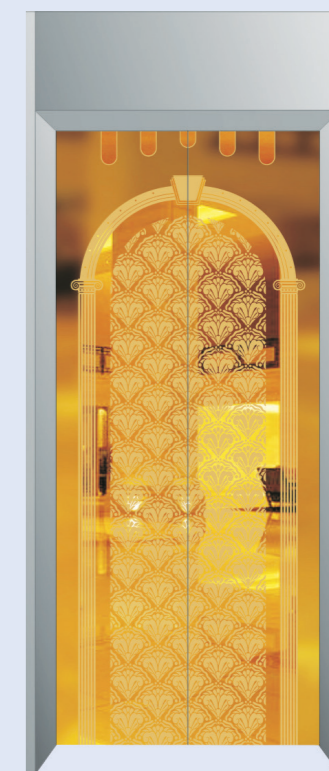
MODEL SMEV/CT06



MODEL SMEV/CT07

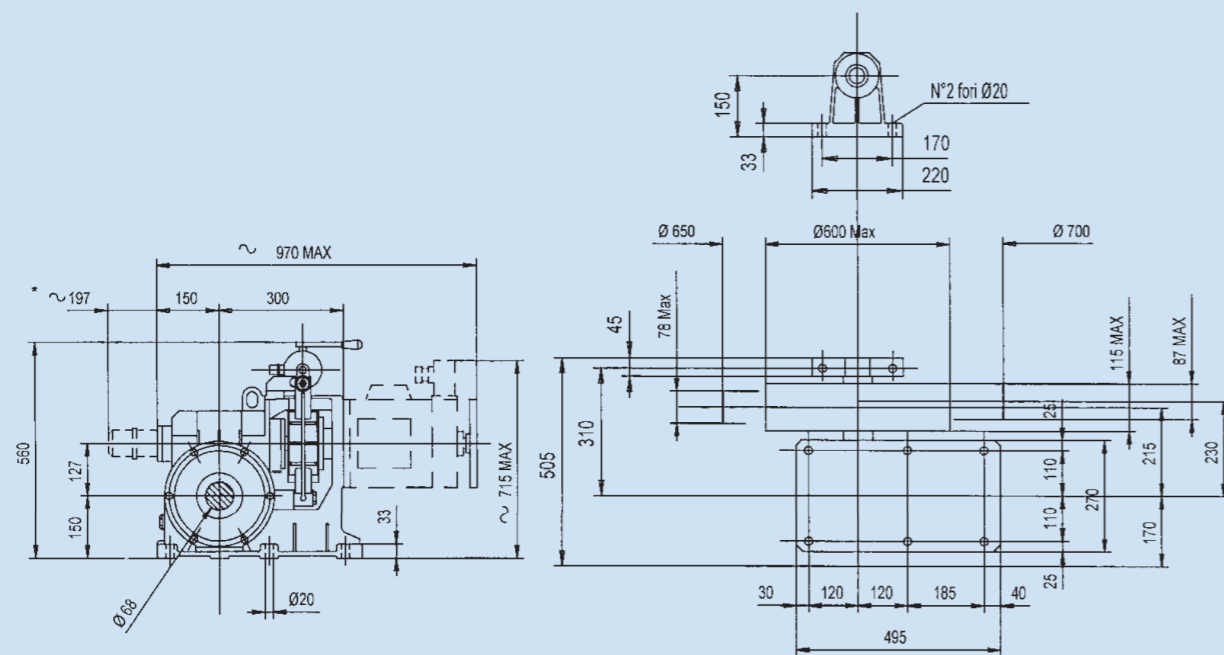
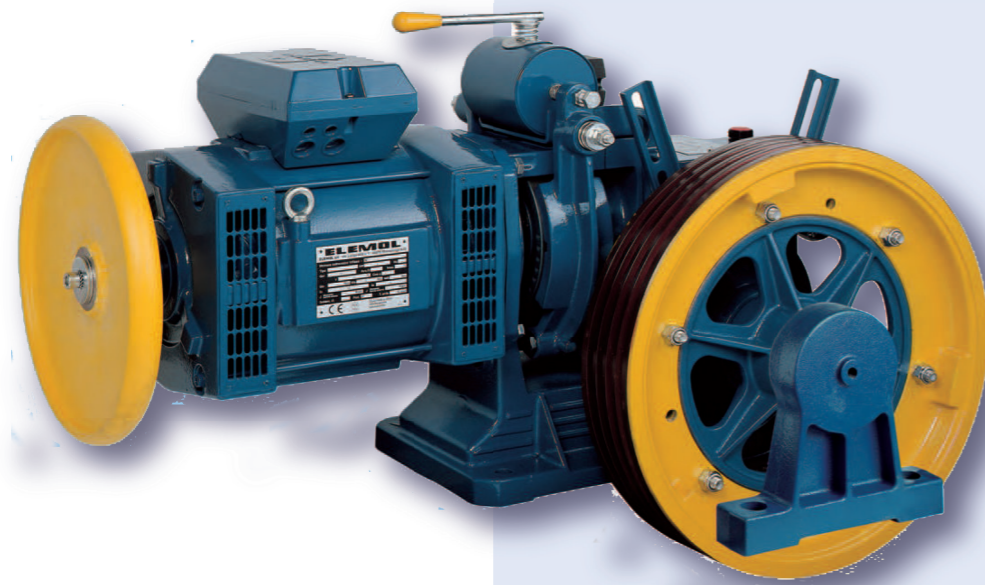


MODEL SMEV/CT08



MODEL SMEV/CT09

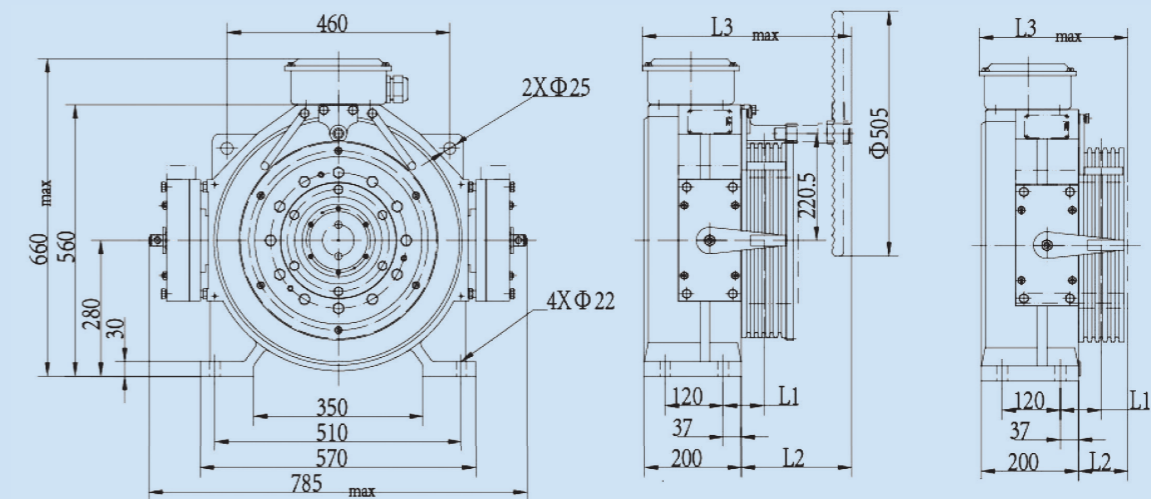
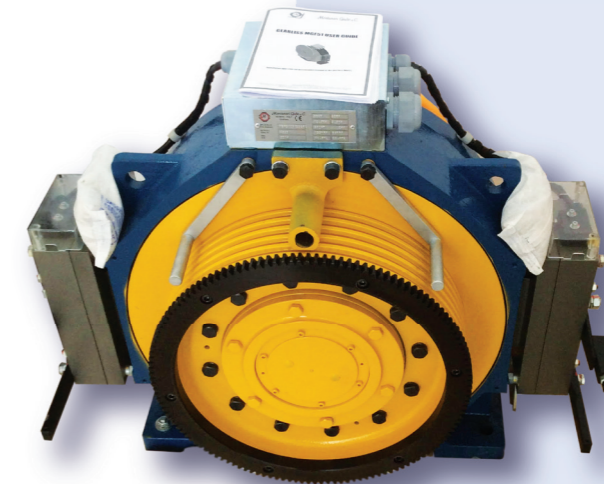
ĐỘNG CƠ MONTANARI



ĐỘNG CƠ CÓ HỘP SỐ

STT	Loại	Model	Tải (kg)	Công suất (KW)	Tốc độ (m/s)	Pulley (mm)
1	Tải hàng	M50	200	1.10	0.50	250
2	Tải khách	M61	300	3.00	1.00	320
3	Tải khách	M73	480	5.50	1.00	480
4	Tải khách	M75S	630	7.50	1.00	480
5	Tải khách	M83	630	11.00	1.50	520
6	Tải khách	M83	800	9.00	1.00	480
7	Tải khách	M93	1000	11.00	1.00	520

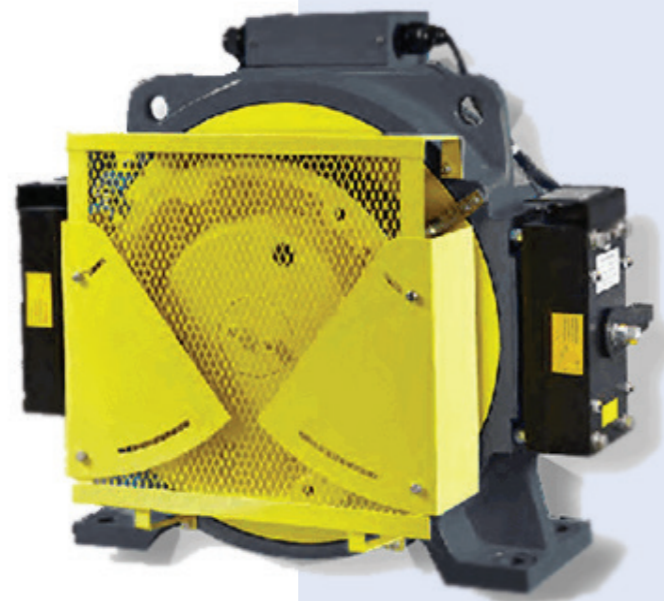
ĐỘNG CƠ MONTANARI



ĐỘNG CƠ KHÔNG HỘP SỐ

STT	Loại	Model	Tải (kg)	Tốc độ (m/s)	Công suất (KW)	Pulley (mm)
1	Tải khách	MG200.3	480	1.00	4.30	210
2	Tải khách	MG200.3	630	1.00	5.00	160
3	Tải khách	MGV25S	320	1.00	2.60	320
4	Tải khách	MGV25S	400	1.00	2.60	320
5	Tải khách	MGV25S	480	1.00	3.00	320
6	Tải khách	MGV25S	630	1.00	4.70	210
7	Tải khách	MGF51	480	1.00	4.30	400
8	Tải khách	MGF51	630	1.00	5.30	400
9	Tải khách	MGF51	630	1.50	8.00	400
10	Tải khách	MGF51	750	1.00	5.80	400
11	Tải khách	MGF51	750	1.50	9.00	400
12	Tải khách	MG250.5 [MG25S.5]	800	1.00	5.70	240
13	Tải khách	MG250.5 [MG25S.5]	1000	1.00	7.30	240
14	Tải khách	MGV25.5	1000	1.00	7.00	320

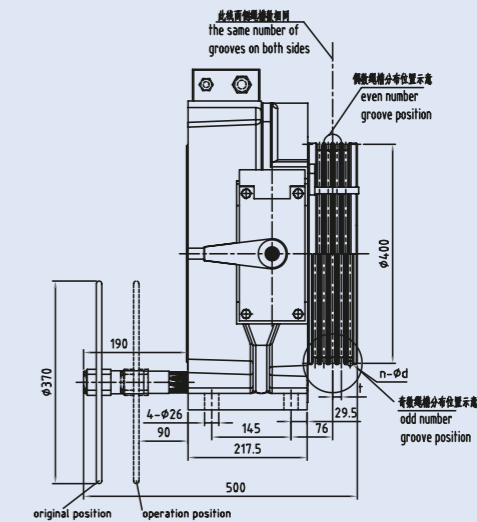
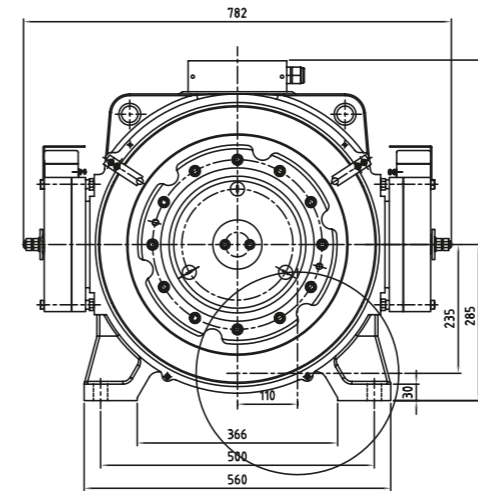
ĐỘNG CƠ KDS



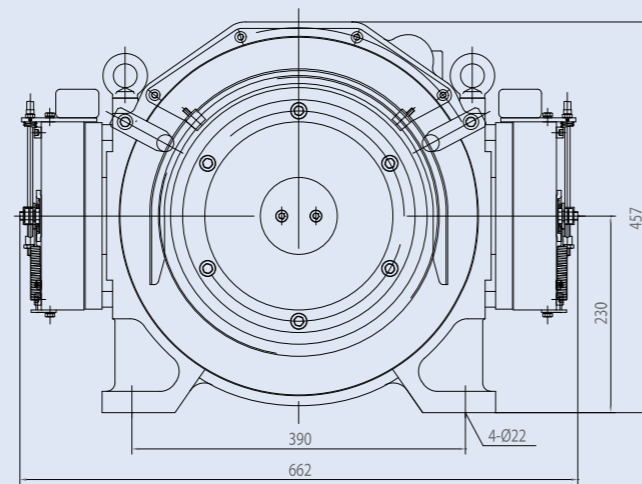
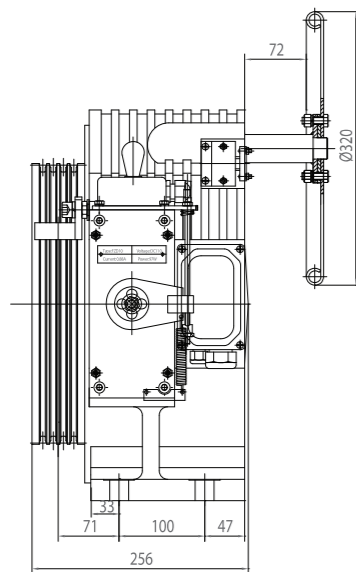
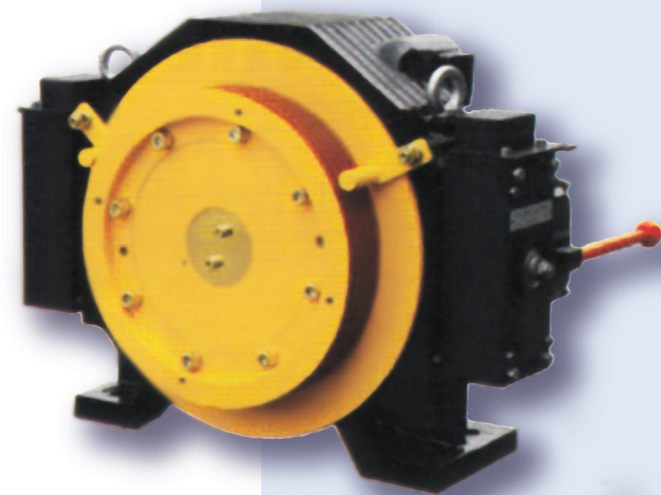
THÔNG SỐ KỸ THUẬT

Model	Capacity (kg)	Elevator Speed (m/s)	Rated Output (kW)	Rated Current (A)	Rated Speed (rpm)	Frequency (Hz)	Sheave Diameter (mm)	Poles (2p)	Torque (Nm)	Ropes	Groove Dist (mm)	Cut Angle	Groove Angle	Shaft Load (kg)	Brake Voltage	Turning Gear	Remote Release	Inertia (kg m ²)	Weight (kg)	Outline Drawing No.
WJC-320-100	320	1	2.1	6.5	116	19.3	330	20	175	4-Φ8	12	β=90°	γ=30°	1500	DC110V	Y	Y	1.92	220	OSD.300.433
WJC-450-100	450	1	3.0	8.5	116	19.3	330	20	247	4-Φ8	12	β=90°	γ=30°	1500	DC110V	Y	Y	1.92	220	OSD.300.433
WJC-450-150	450	1.5	4.5	13.0	174	28.9	330	20	247	4-Φ8	12	β=90°	γ=30°	1500	DC110V	Y	Y	1.92	220	OSD.300.433
WJC-450-160	450	1.6	4.8	13.0	185	30.8	330	20	247	4-Φ8	12	β=90°	γ=30°	1500	DC110V	Y	Y	1.92	220	OSD.300.433
WJC-450-175	450	1.75	5.3	13.0	203	33.8	330	20	247	4-Φ8	12	β=90°	γ=30°	1500	DC110V	Y	Y	1.92	220	OSD.300.433
WJC-630-100	630	1	4.3	11.0	95	15.9	400	20	432	4-Φ10	16	β=95°	γ=30°	2,000	DC110V	Y	Y	2.58	260	OSD.300.403
WJC-630-150	630	1.5	6.4	16.5	143	23.9	400	20	425	4-Φ10	16	β=95°	γ=30°	2,000	DC110V	Y	Y	2.58	260	OSD.300.403
WJC-630-160	630	1.6	6.8	16.5	153	25.5	400	20	425	4-Φ10	16	β=95°	γ=30°	2,000	DC110V	Y	Y	2.58	260	OSD.300.403
WJC-630-175	630	1.75	7.4	16.5	167	27.8	400	20	423	4-Φ10	16	β=95°	γ=30°	2,000	DC110V	Y	Y	2.58	260	OSD.300.403
WJC-800-100	800	1	5.4	12.0	95	15.9	400	20	543	5-Φ10	16	β=95°	γ=30°	3,000	DC110V	Y	Y	3.45	320	OSD.300.404
WJC-800-150	800	1.5	8.1	20.0	143	23.9	400	20	540	5-Φ10	16	β=95°	γ=30°	3,000	DC110V	Y	Y	3.45	320	OSD.300.404
WJC-800-160	800	1.6	8.6	20.0	153	25.5	400	20	537	5-Φ10	16	β=95°	γ=30°	3,000	DC110V	Y	Y	3.45	320	OSD.300.404
WJC-800-175	800	1.75	9.6	20.0	167	27.8	400	20	549	5-Φ10	16	β=95°	γ=30°	3,000	DC110V	Y	Y	3.45	320	OSD.300.404
WJC-800-200	800	2.0	11.0	25.0	191	31.8	400	20	550	5-Φ10	16	β=95°	γ=30°	3,000	DC110V	Y	Y	3.77	320	OSD.300.404
WJC-800-250	800	2.5	13.8	30.0	239	39.8	400	20	550	5-Φ10	16	β=95°	γ=30°	3,000	DC110V	Y	Y	3.77	320	OSD.300.404
WJC-1000-100	1,000	1	6.4	15.0	95	15.9	400	20	640	5-Φ10	16	β=95°	γ=30°	3,000	DC110V	Y	Y	3.77	320	OSD.300.404
WJC-1000-150	1,000	1.5	10.0	26.0	143	23.9	400	20	665	5-Φ10	16	β=95°	γ=30°	3,000	DC110V	Y	Y	3.77	320	OSD.300.404
WJC-1000-160	1,000	1.6	10.7	26.0	153	25.5	400	20	665	5-Φ10	16	β=95°	γ=30°	3,000	DC110V	Y	Y	3.77	320	OSD.300.404
WJC-1000-175	1,000	1.75	11.7	26.0	167	27.8	400	20	669	5-Φ10	16	β=95°	γ=30°	3,000	DC110V	Y	Y	3.77	320	OSD.300.404
WJC-1000-200	1,000	2.0	13.3	30.0	191	31.8	400	20	665	6-Φ10	16	β=95°	γ=30°	3,000	DC110V	Y	Y	3.77	340	OSD.300.405
WJC-1000-250	1,000	2.5	16.6	36.0	239	39.8	400	20	665	6-Φ10	16	β=95°	γ=30°	3,000	DC110V	Y	Y	3.77	340	OSD.300.405
WJC-1150-100	1,150	1	7.6	19.0	95	15.9	400	20	764	6-Φ10	16	β=95°	γ=30°	3,500	DC110V	Y	Y	3.77	370	OSD.300.405
WJC-1150-150	1,150	1.5	11.4	29.5	143	23.9	400	20	761	6-Φ10	16	β=95°	γ=30°	3,500	DC110V	Y	Y	3.77	370	OSD.300.405
WJC-1150-160	1,150	1.6	12.2	29.5	153	25.5	400	20	761	6-Φ10	16	β=95°	γ=30°	3,500	DC110V	Y	Y	3.77	370	OSD.300.405
WJC-1150-175	1,150	1.75	13.3	29.5	167	27.8	400	20	761	6-Φ10	16	β=95°	γ=30°	3,500	DC110V	Y	Y	3.77	370	OSD.300.405
WJC-1150-200	1,150	2	15.3	33.5	191	31.8	400	20	765	6-Φ10	16	β=95°	γ=30°	3,500	DC110V	Y	Y	3.77	370	OSD.300.405
WJC-1150-250	1,150	2.5	19.1	41.5	239	39.8	400	20	763	6-Φ10	16	β=95°	γ=30°	3,500	DC110V	Y	Y	3.77	370	OSD.300.405
WJC-1250-100	1,250	1	8.3	18.0	95	15.9	400	20	834	6-Φ10	16	β=95°	γ=30°	3,500	DC110V	Y	Y	3.77	370	OSD.300.405
WJC-1250-150	1,250	1.5	12.4	32.0	143	23.9	400	20	828	6-Φ10	16	β=95°	γ=30°	3,500	DC110V	Y	Y	3.77	370	OSD.300.405
WJC-1250-160	1,250	1.6	13.3	32.0	153	25.5	400	20	830	6-Φ10	16	β=95°	γ=30°	3,500	DC110V	Y	Y	3.77	370	OSD.300.405
WJC-1250-175	1,250	1.75	14.5	32.0	167	27.8	400	20	829	6-Φ10	16	β=95°	γ=30°	3,500	DC110V	Y	Y	3.77	370	OSD.300.405

ĐỘNG CƠ KDS



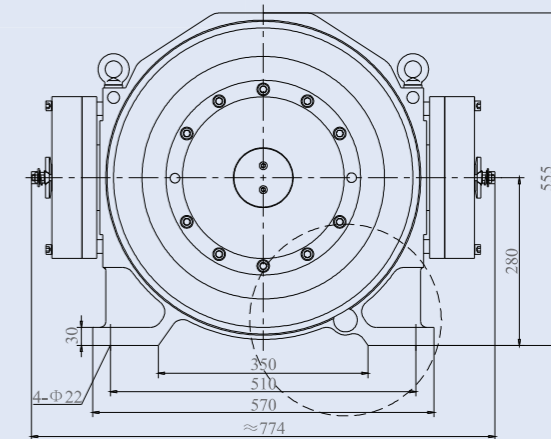
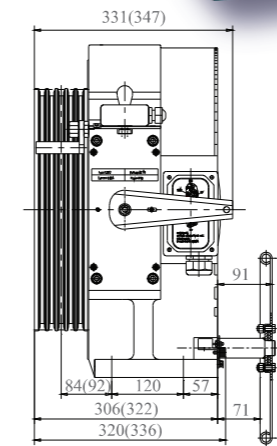
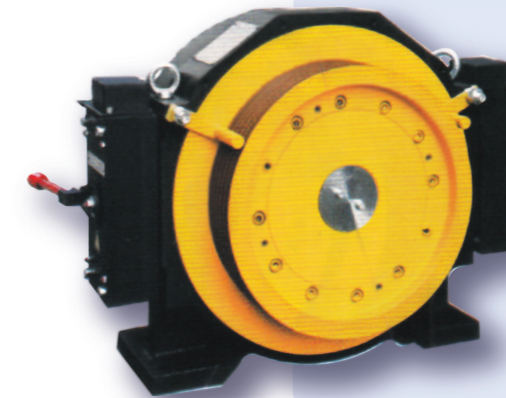
ĐỘNG CƠ TORIN



THÔNG SỐ KỸ THUẬT

Ref:	Load Charge	Speed Vitesse	Height Course	Ø Sheave ø Poulie	Rope sheave Câbles	Current Intensité	Torque Couple	Rated speed Vitesse de rotation	Frequency Fréquence	Power Puissance	Pole Pôle	Rating Facteur de marche	INS. class INS. classe	IP code Protection
	(kg)	(m/s)	(m)	(mm)	(mm)	(A)	(Nm)	(rpm)	(Hz)	(kW)				
GTW7-30P5	320	0,5	≤ 80	Ø 325	3XØ8X12	3,1	200	59	9,8	1,3	20	S5(40%)	F	IP41
GTW7-31P0	320	1,0	≤ 80	Ø 325	3XØ8X12	5,8	200	118	19,6	2,5	20	S5(40%)	F	IP41
GTW7-31P5	320	1,5	≤ 80	Ø 325	3XØ8X12	9,2	200	177	29,5	3,7	20	S5(40%)	F	IP41
GTW7-31P6	320	1,6	≤ 80	Ø 325	3XØ8X12	9,2	200	189	31,5	4	20	S5(40%)	F	IP41
GTW7-31P7	320	1,75	≤ 80	Ø 325	3XØ8X12	9,9	200	206	34,3	4,3	20	S5(40%)	F	IP41
GTW7-40P5	450	0,5	≤ 80	Ø 325	4XØ8X12	4,1	265	59	9,8	1,6	20	S5(40%)	F	IP41
GTW7-41P0	450	1,0	≤ 80	Ø 325	4XØ8X12	7,9	265	118	19,6	3,3	20	S5(40%)	F	IP41
GTW7-41P5	450	1,5	≤ 80	Ø 325	4XØ8X12	12,2	265	177	29,5	4,9	20	S5(40%)	F	IP41
GTW7-41P6	450	1,6	≤ 80	Ø 325	4XØ8X12	12,2	265	189	31,5	5,3	20	S5(40%)	F	IP41
GTW7-41P7	450	1,75	≤ 80	Ø 325	4XØ8X12	13,1	265	206	34,3	5,7	20	S5(40%)	F	IP41
GTW7-50P5	550	0,5	≤ 80	Ø 325	5XØ8X12	6,4	290	59	9,8	1,8	20	S5(40%)	F	IP41
GTW7-50P6	550	0,63	≤ 80	Ø 325	5XØ8X12	6,4	290	74	12,3	2,3	20	S5(40%)	F	IP41
GTW7-50P7	550	0,75	≤ 80	Ø 325	5XØ8X12	9,3	290	88	14,6	2,7	20	S5(40%)	F	IP41
GTW7-51P0	550	1	≤ 80	Ø 325	5XØ8X12	9,3	290	118	19,6	3,6	20	S5(40%)	F	IP41
GTW7-60P5	630	0,5	≤ 80	Ø 325	5XØ8X12	7,1	322	59	9,8	2,0	20	S5(40%)	F	IP41
GTW7-60P6	630	0,63	≤ 80	Ø 325	5XØ8X12	7,1	322	74	12,3	2,5	20	S5(40%)	F	IP41
GTW7-60P7	630	0,75	≤ 80	Ø 325	5XØ8X12	10,3	322	88	14,6	3,0	20	S5(40%)	F	IP41
GTW7-61P0	630	1	≤ 80	Ø 325	5XØ8X12	10,3	322	118	19,6	4,0	20	S5(40%)	F	IP41

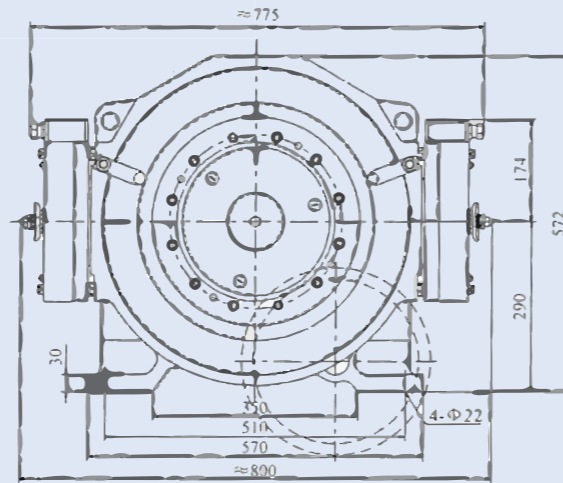
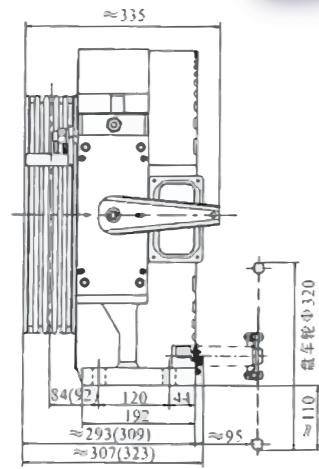
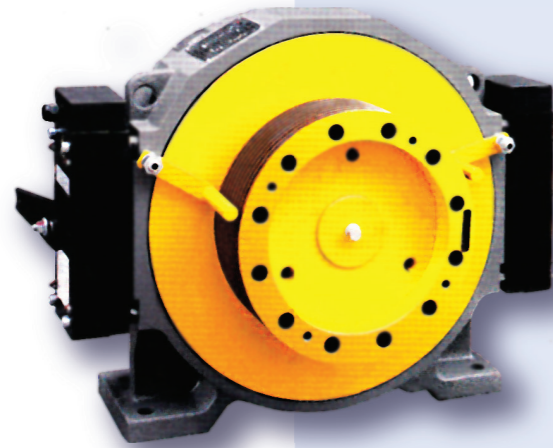
ĐỘNG CƠ TORIN



THÔNG SỐ KỸ THUẬT

Ref:	Load Charge	Speed Vitesse	Height Course	Ø Sheave ø Poulie	Rope sheave Câbles	Current Intensité	Torque Couple	Rated speed Vitesse de rotation	Frequency Fréquence	Power Puissance	Pole Pôle	Rating Facteur de marche	INS. class INS. classe	IP code Protection
	(kg)	(m/s)	(m)	(mm)	(mm)	(A)	(Nm)	(rpm)	(Hz)	(kW)				
GTW8-60P5	630	0,5	≤ 80	Ø 400	4XØ10X16	5,6	450	48	8	2,3	20	S5(40%)	F	IP41
GTW8-61P0	630	1	≤ 80	Ø 400	4XØ10X16	10,6	450	96	16	4,5	20	S5(40%)	F	IP41
GTW8-61P5	630	1,5	≤ 80	Ø 400	4XØ10X16	16,5	450	144	24	6,8	20	S5(40%)	F	IP41
GTW8-61P6	630	1,6	≤ 80	Ø 400	4XØ10X16	16,5	450	153	25,5	7,2	20	S5(40%)	F	IP41
GTW8-61P7	630	1,75	≤ 80	Ø 400	4XØ10X16	18	450	167	27,8	7,9	20	S5(40%)	F	IP41
GTW8-62P0	630	2	≤ 80	Ø 400	4XØ10X16	20,3	450	192	32	9	20	S5(40%)	F	IP41
GTW8-80P5	800	0,5	≤ 80	Ø 400	5XØ10X16	6,8	550	48	8	2,8	20	S5(40%)	F	IP41
GTW8-81P0	800	1	≤ 80	Ø 400	5XØ10X16	12,8	550	96	16	5,5	20	S5(40%)	F	IP41
GTW8-81P5	800	1,5	≤ 80	Ø 400	5XØ10X16	20,8	550	144	24	8,3	20	S5(40%)	F	IP41
GTW8-81P6	800	1,6	≤ 80	Ø 400	5XØ10X16	20,8	550	153	25,5	8,8	20	S5(40%)	F	IP41
GTW8-81P7	800	1,75	≤ 80	Ø 400	5XØ10X16	21,8	550	167	27,8	9,6	20	S5(40%)	F	IP41
GTW8-82P0	800	2	≤ 80	Ø 400	5XØ10X16	24,9	550	192	32	11	20	S5(40%)	F	IP41
GTW8-100P5	1000	0,5	≤ 80	Ø 400	5XØ10X16	8	670	48	8	3,4	20	S5(40%)	F	IP41
GTW8-101P0	1000	1	≤ 80	Ø 400	5XØ10X16	15,7	670	96	16	6,7	20	S5(40%)	F	IP41
GTW8-101P5	1000	1,5	≤ 80	Ø 400	5XØ10X16	25,2	670	144	24	10	20	S5(40%)	F	IP41
GTW8-101P6	1000	1,6	≤ 80	Ø 400	5XØ10X16	25,2	670	153	25,5	10,7	20	S5(40%)	F	IP41
GTW8-101P7	1000	1,75	≤ 80	Ø 400	5XØ10X16	26,7	670	167	27,8	11,7	20	S5(40%)	F	IP41
GTW8-102P0	1000	2	≤ 80	Ø 400	5XØ10X16	30,3	670	192	32	13,4	20	S5(40%)	F	IP41
GTW8-110P5A	1150	0,5	≤ 80	Ø 340	8XØ8X12	10	670	56	9,4	3,9	20	S5(40%)	F	IP41
GTW8-111P0A	1150	1	≤ 80	Ø 340	8XØ8X12	17,7	670	112	18,7	7,9	20	S5(40%)	F	IP41
GTW8-111P5A	1150	1,5	≤ 80	Ø 340	8XØ8X12	28,4	670	168	28	11,8	20	S5(40%)	F	IP41
GTW8-111P6A	1150	1,6	≤ 80	Ø 340	8XØ8X12	28,4	670	180	30	12,6	20	S5(40%)	F	IP41
GTW8-111P7A	1150	1,75	≤ 80	Ø 340	8XØ8X12	30,4	670	198	33	13,9	20	S5(40%)	F	IP41
GTW8-112P0A	1150	2	≤ 80	Ø 340	8XØ8X12	35,7	670	225	37,5	15,8	20	S5(40%)	F	IP41

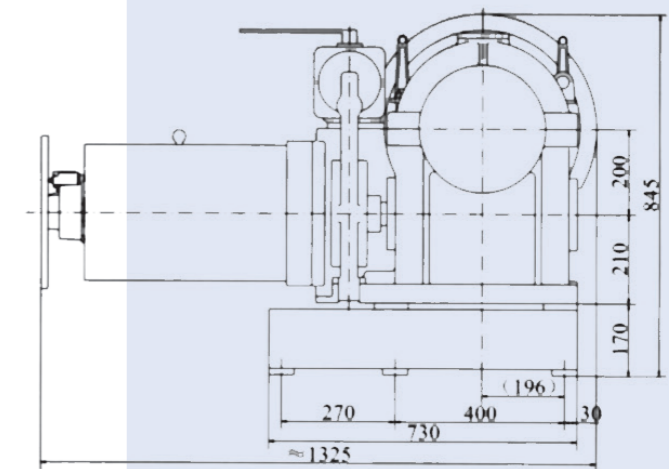
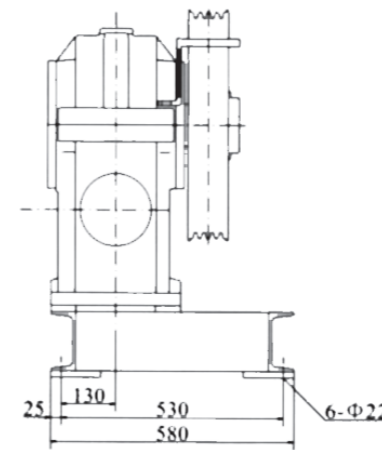
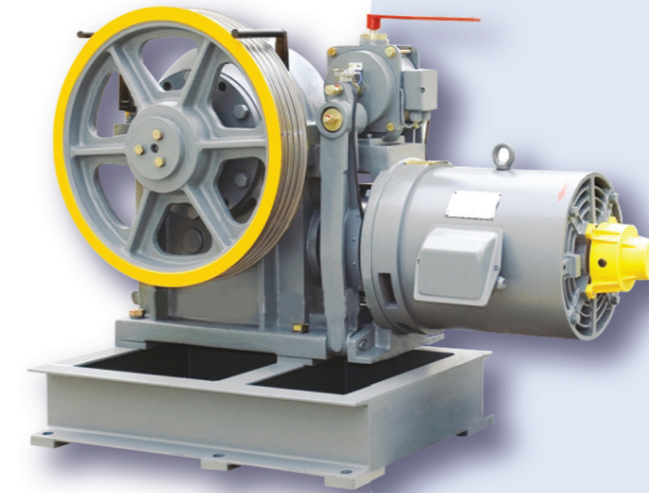
ĐỘNG CƠ TORIN



THÔNG SỐ KỸ THUẬT

Ref:	Load Charge	Speed Vitesse	Height Course	ø Sheave ø Poulie	Rope sheave Câbles	Current Intensité	Torque Couple	Rated speed Vitesse de rotation	Frequency Fréquence	Power Puis-sance	Pole Pôle	Rating Facteur de marche	INS. class INS. classe	IP code Protec-tion
	(kg)	(m/s)	(m)	(mm)	(mm)	(A)	(Nm)	(rpm)	(Hz)	(kW)				
GTW9-60P5	630	0,5	≤ 80	Ø 400	4XØ10X16	5,9	420	48	12,8	2,1	32	S5(40%)	F	IP41
GTW9-61P0	630	1	≤ 80	Ø 400	4XØ10X16	9,7	420	96	25,6	4,2	32	S5(40%)	F	IP41
GTW9-61P5	630	1,5	≤ 80	Ø 400	4XØ10X16	14,9	420	144	38,4	6,3	32	S5(40%)	F	IP41
GTW9-61P6	630	1,6	≤ 80	Ø 400	4XØ10X16	14,9	420	153	40,8	6,7	32	S5(40%)	F	IP41
GTW9-61P7	630	1,75	≤ 80	Ø 400	4XØ10X16	15,9	420	167	44,5	7,3	32	S5(40%)	F	IP41
GTW9-62P0	630	2	≤ 80	Ø 400	4XØ10X16	18,3	420	192	51,2	8,4	32	S5(40%)	F	IP41
GTW9-81P0	800	1	≤ 80	Ø 400	5XØ10X16	12,1	530	96	25,6	5,3	32	S5(40%)	F	IP41
GTW9-81P5	800	1,5	≤ 80	Ø 400	5XØ10X16	18,8	530	144	38,4	8	32	S5(40%)	F	IP41
GTW9-81P6	800	1,6	≤ 80	Ø 400	5XØ10X16	18,8	530	153	40,8	8,5	32	S5(40%)	F	IP41
GTW9-81P7	800	1,75	≤ 80	Ø 400	5XØ10X16	20,7	530	167	44,5	9,3	32	S5(40%)	F	IP41
GTW9-82P0	800	2	≤ 80	Ø 400	5XØ10X16	23,2	530	192	51,2	10,7	32	S5(40%)	F	IP41
GTW9-100P5	1000	0,5	≤ 80	Ø 400	5XØ10X16	8,3	650	48	12,8	3,3	32	S5(40%)	F	IP41
GTW9-101P0	1000	1	≤ 80	Ø 400	5XØ10X16	14,6	650	96	25,6	6,5	32	S5(40%)	F	IP41
GTW9-101P5	1000	1,5	≤ 80	Ø 400	5XØ10X16	22,9	650	144	38,4	9,8	32	S5(40%)	F	IP41
GTW9-101P6	1000	1,6	≤ 80	Ø 400	5XØ10X16	22,9	650	153	40,8	10,4	32	S5(40%)	F	IP41
GTW9-101P7	1000	1,75	≤ 80	Ø 400	5XØ10X16	24,8	650	167	44,5	11,4	32	S5(40%)	F	IP41
GTW9-102P0	1000	2	≤ 80	Ø 400	5XØ10X16	27,7	650	192	51,2	13,1	32	S5(40%)	F	IP41
GTW9-111P0	1150	1	≤ 80	Ø 340	8XØ8X12	17,1	650	112	29,9	7,6	32	S5(40%)	F	IP41
GTW9-111P5	1150	1,5	≤ 80	Ø 340	8XØ8X12	26,2	650	168	44,8	11,4	32	S5(40%)	F	IP41
GTW9-111P6	1150	1,6	≤ 80	Ø 340	8XØ8X12	26,2	650	180	48	12,3	32	S5(40%)	F	IP41
GTW9-111P7	1150	1,75	≤ 80	Ø 340	8XØ8X12	28,9	650	198	52,8	13,5	32	S5(40%)	F	IP41
GTW9-112P0	1150	2	≤ 80	Ø 340	8XØ8X12	33	650	225	60	15,3	32	S5(40%)	F	IP41

ĐỘNG CƠ MITSUBISHI



THÔNG SỐ KỸ THUẬT

Model	Load(kg)	Lift Speed (m/s)	Ratio	Sheave Diam (mm)	Rope sheave (mm)	Motor Power (kw)	Pole
YJ140	300	1.0	51:2	340	4x8(pitch12)	3.7	4
FYJ180	500	1.0	41:1	480	3x12(pitch18)	5.5	4
FYJ180	630	1.0	36:1	480	4x12(pitch18)	7.5	4
FYJ200	900	1.0	41:1	530	5x12(pitch20)	11	4
FYJ200	800	1.5	53:2	530	5x12(pitch20)	15	4
YJ240B	1000	1.0	49:1	620	5x12(pitch20)	11	4
YJ240B	1000	1.5	59:2	620	6x12(pitch20)	15	4
YJ240B	1000	1.75	55:2	620	6x12(pitch20)	18.5	4
YJ245D	1250	1.0	61:2	650	6x12(pitch20)	15	6
YJ245D	1350	1.5	61:2	650	8x12(pitch20)	22	6
YJ245D	1600	1.0	61:2	650	8x12(pitch20)	18.5	6
YJ275	1350	1.0	59:2	650	6x12(pitch20)	15	6
YJ275	1350	1.5	59:2	650	8x12(pitch20)	22	4
YJ275	1600	1.0	59:2	650	8x12(pitch20)	18.5	6
YJ275	1600	2.0	49:2	650	8x12(pitch20)	30	4
YJ320	2500	1.0	61:1	800	8x16(pitch25)	30	4
YJ320	2500	1.5	69:2	700	8x16(pitch25)	37	4

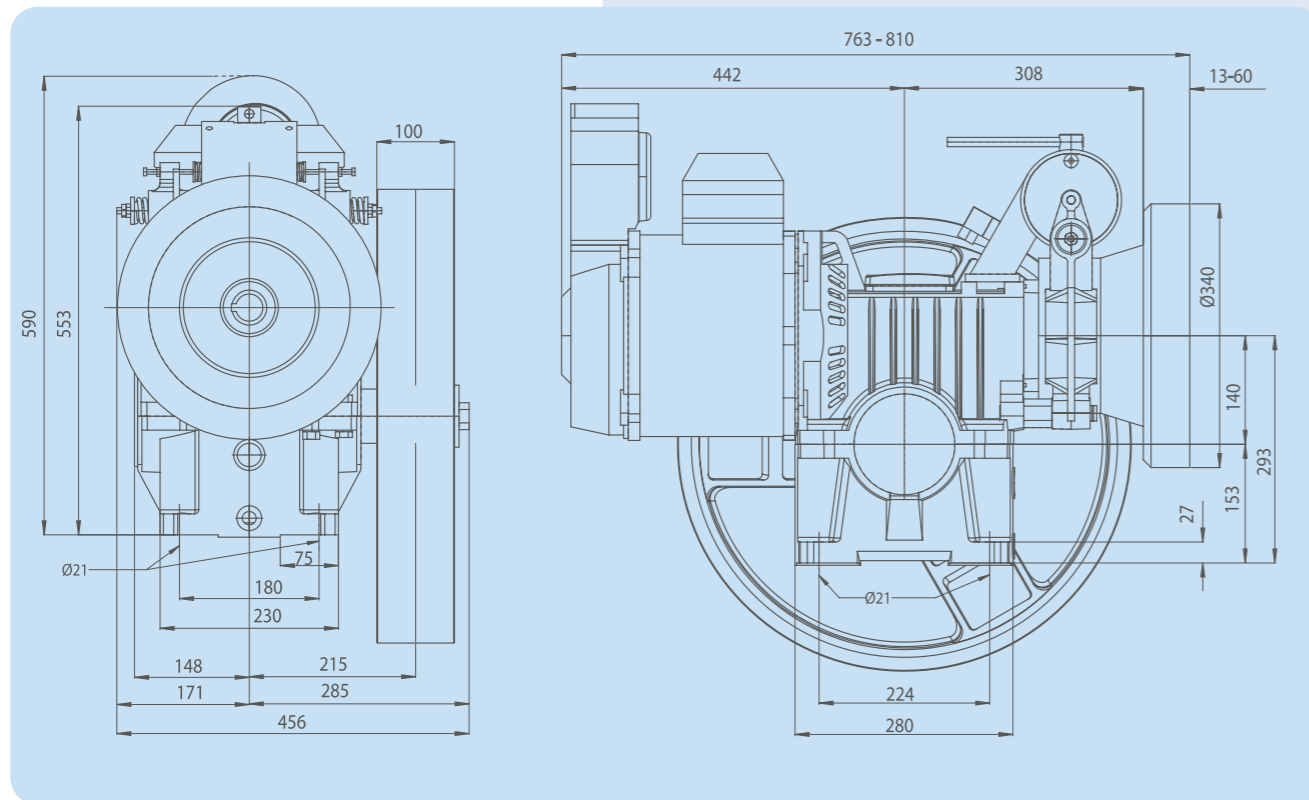
ĐỘNG CƠ GEM



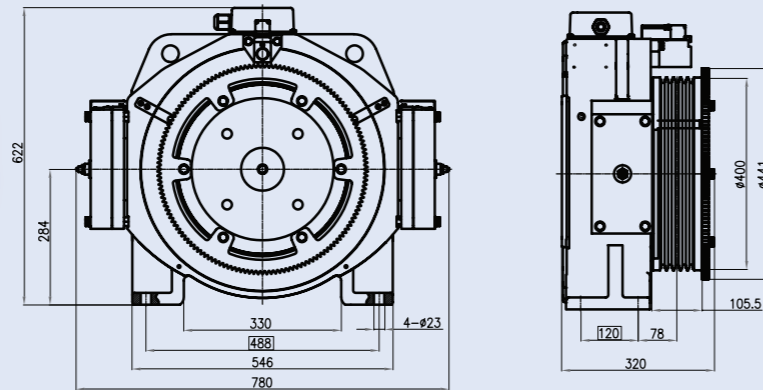
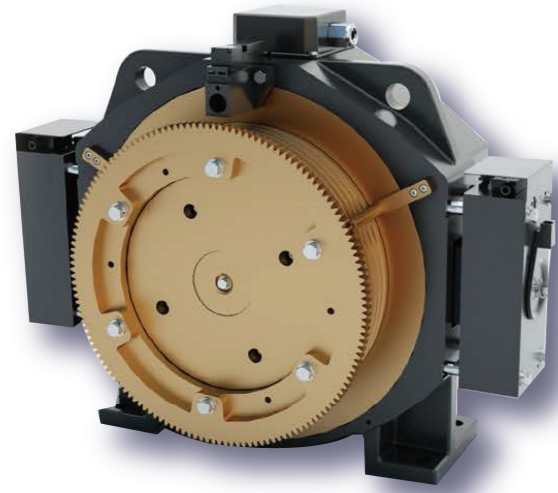
ĐỘNG CƠ GEM

THÔNG SỐ KỸ THUẬT

Portata Useful load (Kg)	Velocità Speed (m/s)	Peso cabina max Max cabin weight (Kg)		Max. peso funi + cavi elettr. non comp. Max not balanced weight for ropes and elect. cables (Kg)	Tipo argano Winch model	Rapporto di riduzione Reduction ratio	Puleggia Traction Sheave Ø (mm)	Rendimento argano Gear efficiency	Potenza motore Motor power (kWasy)	Potenza motore Motor power (Hp syn)	Coppia max Max torque (Nm)	Carico statico max Max static load (kg)	
		senza supporto without ext. support	con supporto with ext. support									senza supporto without ext. support	con supporto with ext. support
250	0.66	943	1143	40	HW134	65/1	550	0.58	2.7	4.0	950	2300	2700
	0.72	793				65/1	600	0.58	3.0	4.5	950	2000	
	0.82	943				53/1	550	0.60	3.4	5.0	996	2300	
	1.03	943				42/1	550	0.65	3.7	5.5	1016	2300	
320	0.66	855	1085	50	HW134	65/1	550	0.58	3.0	4.5	950	2300	2700
	0.72	735				65/1	600	0.58	3.4	5.0	950	2000	
	0.82	855				53/1	550	0.60	3.7	5.5	996	2300	
	0.89	735				53/1	600	0.60	3.7	5.5	996	2000	
	1.03	855				42/1	550	0.65	4.0	6.0	1016	2300	
480	0.66	760	1110	60	HW134	65/1	550	0.60	4.0	6.0	950	2300	2700
	0.71					53/1	480	0.65	4.5	6.7	996		
	0.82					53/1	550	0.60	5.0	7.4	996		
	1.03					42/1	550	0.65	5.5	8.1	1016		
	1.24	1160	HW140C	70/2	560	0.75	6.1	9.0	1343	3100			
630	0.71	1043		70	HW140C	53/1	480	0.71	5.1	7.5	1356	3100	
	0.83					53/1	560	0.71	5.5	8.1	1356		
	1.00					44/1	560	0.73	6.8	10.1	1430		
	1.07					44/1	600	0.73	6.8	10.1	1430		
	1.24					70/2	560	0.75	7.6	11.2	1343		
800	0.70	1955		90	HW175	54/1	480	0.67	6.1	9.0	1763	4100	
	0.81					54/1	560	0.67	7.6	11.2	1763		
	1.05					42/1	560	0.70	8.8	13.0	1985		
	1.22					36/1	560	0.73	10.2	15.1	1810		
	1.62					58/2	600	0.75	13.0	19.2	1805		
	2.03					44/2	560	0.76	16.2	24.0	1710		
1000	0.70	1795		110	HW175C	54/1	480	0.67	8.1	12.0	2351	5200	
	0.81					54/1	560	0.67	9.4	14.0	2351		
	1.05					42/1	560	0.70	11.0	16.3	2480		
	1.22					36/1	560	0.73	13.0	19.2	2380		
	1.62					58/2	600	0.75	16.2	24.0	2282		
	2.00					42/2	560	0.76	20.0	29.6	2120		
1350	0.65	3428		120	HW220C	73/1	600	0.63	11.0	16.3	4527	9000	
	0.81					58/1	600	0.66	13.0	19.2	4378		
	1.04					49/1	650	0.68	15.0	22.2	4527		
	1.25					41/1	650	0.70	18.0	26.6	4580		
	1.60					59/2	600	0.73	23.0	34.0	4178		
	2.01					47/2	600	0.76	26.0	38.5	4012		
1600	0.65	3230		140	HW220C	73/1	600	0.63	13.0	19.2	4527	9000	
	0.81					58/1	600	0.66	15.0	22.2	4378		
	1.04					49/1	650	0.68	18.0	26.6	4527		
	1.25					41/1	650	0.70	23.0	34.0	4580		
	1.60					59/2	600	0.73	26.0	38.5	4178		
	2.01					47/2	600	0.76	30.0	44.4	4012		
2000	0.65	2925		150	HW220C	73/1	600	0.63	15.0	22.2	4527	9000	
	0.81					58/1	600	0.66	18.0	26.6	4378		
	1.04					49/1	650	0.68	23.0	34.0	4527		
	1.25					41/1	650	0.70	26.0	38.5	4580		
	1.60					59/2	600	0.73	30.0	44.4	4178		



ĐỘNG CƠ OTIS



THÔNG SỐ KỸ THUẬT

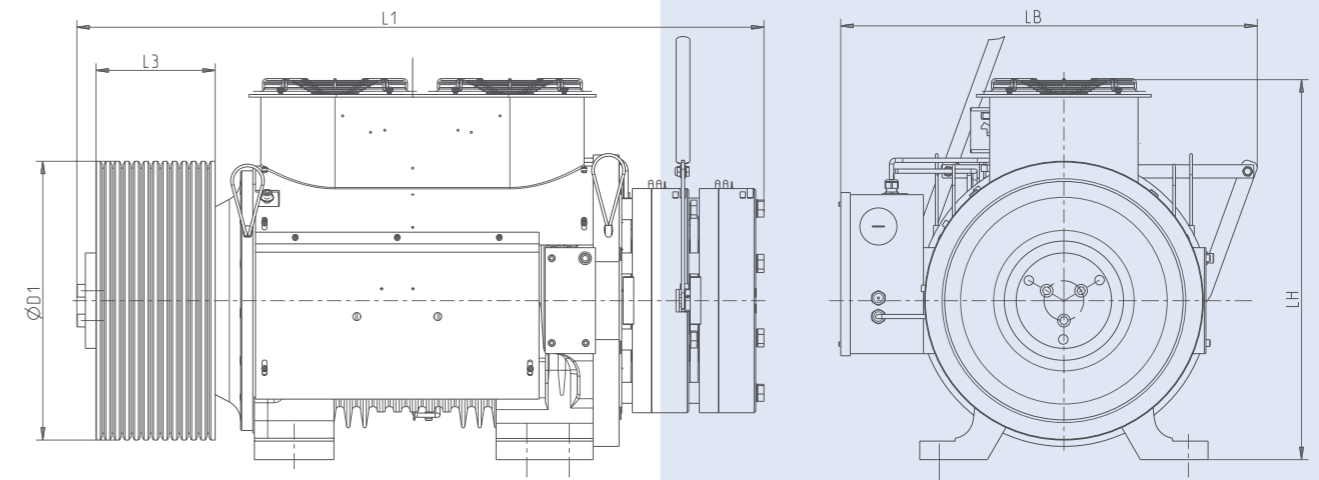
Series	Load (kg)	Speed (m/s)	Height (m)	Torque (Nm)	Sheave Dia. (mm)	Rope Dia. (mm)	Groove (pcs)	Distance Between Grooves (mm)	Power (Kw)	Rated Voltage (V)	Current (A)	Equency (Hz)	Rated Speed (rpm)
GET M3.0H	450	0.75	≤80	311	400	Ø8	4	12	2.3	380	6	19.1	71.6
		1	≤80	311	400	Ø8	4	12	3.1	380	7.8	25.5	95.5
		1.5	≤80	311	400	Ø8	4	12	4.7	380	11	38.1	143
	630	1	≤80	421	400	Ø8	4	12	4.4	380	9.5	25.5	95.5
		1.5	≤80	421	400	Ø8	4	12	6.2	380	14	38.1	143
		1.75	≤80	421	400	Ø8	4	12	7.5	380	16.2	44.5	167
	800	1	≤80	502	400	Ø10	5	15	5	380	11	25.5	95.5
		1.5	≤80	521	400	Ø10	5	15	7.8	380	17	38.1	143
		1.75	≤80	514	400	Ø10	5	15	9	380	21	44.5	167
2		≤80	535	400	Ø10	5	15	10.7	380	24.1	50.9	191	
	2.5	≤80	535	400	Ø10	5	15	13.4	380	29.6	63.7	239	

Series	Load (kg)	Speed (m/s)	Height (m)	Torque (Nm)	Sheave Dia. (mm)	Rope Dia. (mm)	Groove (pcs)	Distance Between Grooves (mm)	Power (Kw)	Rated Voltage (V)	Current (A)	Equency (Hz)	Rated Speed (rpm)
GET M3.0H	1000	0.5	≤80	641	400	Ø10	5	15	3.2	380	9	12.7	47.7
		1	≤80	604	400	Ø10	5	15	6	380	14	25.5	95.5
		1.5	≤80	669	400	Ø10	5	15	10	380	22.3	38.1	143
		1.6	≤80	668	400	Ø10	5	15	10.7	380	23	40.8	153
		1.75	≤80	669	400	Ø10	6	15	11.7	380	26	44.5	167
		2	≤80	669	400	Ø10	6	15	13.4	380	30.2	50.9	191
		2.5	≤80	669	400	Ø10	6	15	16.7	380	37	63.7	239
	1150	1	≤80	796	400	Ø10	6	15	7	380	15	25.5	95.5
		1.5	≤80	796	400	Ø10	6	15	11.9	380	27.5	38.1	143
		1.75	≤80	796	400	Ø10	6	15	13.9	380	31.5	44.5	167
		2	≤80	796	400	Ø10	6	15	15.9	380	36	50.9	191
		2.5	≤80	800	400	Ø10	6	15	19.9	380	44	63.7	239

ĐỘNG CƠ ZIEHL ABEGG



Dimensions in mm



Description

- Installation width ≤ 320 mm
- Traction sheaves between 160 mm and 500 mm for steel ropes with a diameter of 4 mm to 12 mm or plastic coated ropes

Features

- Machine with traction sheave
- Rope guard acc EN81
- Absolute encoder type Heidenhain ECN1313 EnDat
- Type approved double-circuit brake
- Motor cable already connected up to SM200.30C
- Motor cable is connected in the terminal box with SM200.40C

Options

- Absolute encoder type Heidenhain ECN1313-SSI or ERN1387
- Fast-acting rectifier for brakes with overexcitation
- Traction sheaves 160 mm, 210 mm, 240 mm, 320 mm, 400 mm, 450 mm or 500 mm
- Mechanical hand release system
- Motor cable lengths 5 m, 10 m or 15 m

Technical data

Motor type	Nominal torque [Nm]	Max. axle load [kg]	Nominal speed [min ⁻¹]	Rated output power [kW]
SM200.15C	250	1850	96...300	2.5...7.9
SM200.20C	330	2850		3.3...10.4
SM200.30C	475	2850		4.8...14.1
SM200.40C	600	3300		6.0...18.8

Motor type	L1 [mm]	LH [mm]	LB [mm]	D1 [mm]	L3 [mm]	Rope	Weight [kg]
SM200	487	385	320	160	76	6 x 8,1	167
				210	76	7 x 6,...	175
				240	88	8 x 6,...	180
				320	74	4 x 8	185

HỆ ĐIỀU KHIỂN ĐỨC

LISA10



Our applications are used in:

- Individual lifts
- Traction Lifts
- Hydraulic lifts
- Simplex, Duplex, up to 8 cars, 48 floors and 5 m/s speed
- Full car and landing Bus system wiring provided to allow fast installation time.
- Open loop and Closed Loop
- Gearless and Geared Machine compatibility

Standard items include:

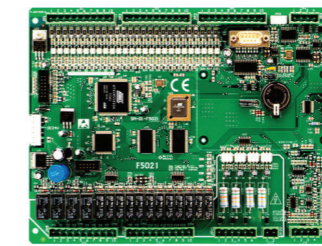
- True position digital indicator for hand-winding
- LCD battery backed fault logger
- Car and landing call push facility
- Test control buttons
- Thermostat
- 240v socket
- Bus System
- Emergency light supply
- Open protocol
- No programming tools required

HỆ ĐIỀU KHIỂN VÀ BIẾN TẦN



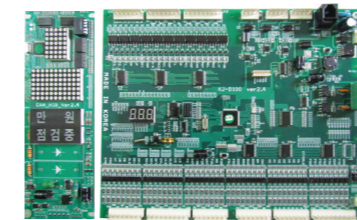
Hệ điều khiển PLC 3G

Công ty TNHH MITSUBISHI – Việt Nam
Website: www.mitsubishielectric.com



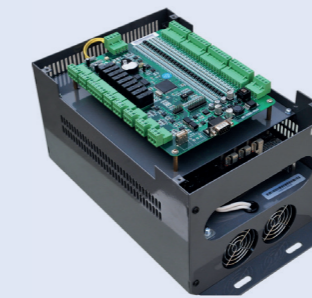
Bo điều khiển STEP

Shanghai STEP Electric Corporation
No. 1560 Siyi Road Shanghai, Shanghai, China 201802
Tel : 86-21-6992-6028, Fax : 86-21-6992-6041
Website: www.stepelectric.com



Bo điều khiển Fuji Hàn Quốc

Fuji Lift co.,ltd
#616 Daegot Nam Street, Yang Chon District,
Kimpo City, Kyonggy, Korea



Bo điều khiển SUMPO SP5000

Shanghai SUMPO Electric Co., Ltd.
17Buildings,Lane2933,HuqingpingHighway,
Zhaoxiang,Qingpu,Shanghai
Tel : 4006-835-836 Fax : 86-69755902
Website: www.gb.sumpo-lift.com



Biến tần Yaskawa Made in Japan

BIẾN TẦN ZIEHL ABEGG



- Extremely economical control of fans with IEC standard motor
- Thanks to IP54 housing it is suitable for outdoor installation (e. g. for air handling units installed on roofs)
- Can be pre-set (upon request) to match the assigned fan
- Plug & Play
- Optionally with integrated main switch
- Operation with shielded motor cable

ZIEHL-ABEGG

ZIEHL-ABEGG AG Heinz-Ziehl-Straße 74653 Künzelsau +49 79 40 1 6 - 0
info@ziehl-abegg.de www.ziehl-abegg.com



Tủ điều khiển Monarch

Suzhou Monarch Control Technology Co., Ltd.
Unit B01, 17/F, MG Tower, 133 Hoi Bun Road,
Kwun Tong, Hong Kong SAR, China
Tel: + 86-512 6637-6666 Fax: + 86-512-62856720
Website: www.szmctc.com



Biến tần FUJI

Website: www.fujielectric.co.jp



Biến tần Mitsubishi

Website: www.mitsubishielectric.com

TRẦN CABIN



MODEL: SMEV-CL01



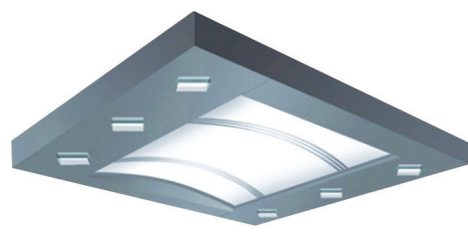
MODEL: SMEV-CL02



MODEL: SMEV-CL03

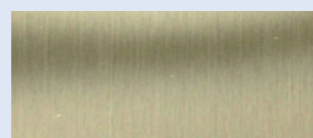


MODEL: SMEV-CL04



MODEL: SMEV-CL05

VẬT LIỆU KHUNG BAO



Inox gương vàng, trắng



Inox gương vàng, trắng

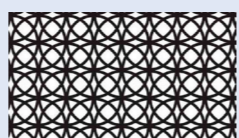
VẬT LIỆU CẢNH CỬA TẦNG



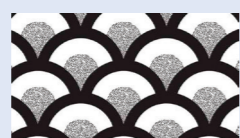
SMEV-MT03



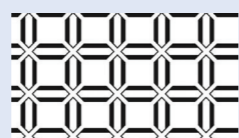
SMEV-MT04



SMEV-MT05



SMEV-MT06



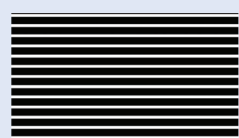
SMEV-MT07



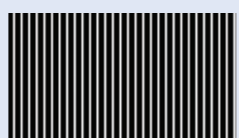
SMEV-MT08



SMEV-MT09



SMEV-MT10

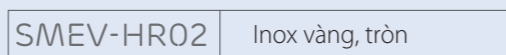


SMEV-MT11

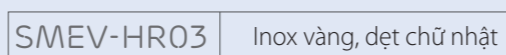
TAY VỊN



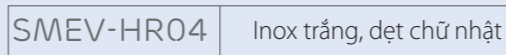
SMEV-HR01 Inox trắng, tròn



SMEV-HR02 Inox vàng, tròn



SMEV-HR03 Inox vàng, dẹt chữ nhật



SMEV-HR04 Inox trắng, dẹt chữ nhật

SÀN ĐÁ CABIN



SMEV-FL06



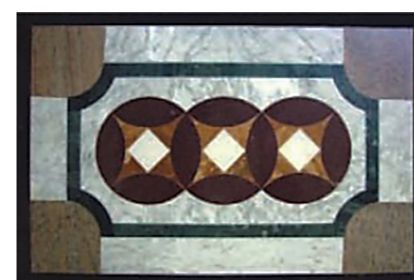
SMEV-FL06



SMEV-FL06



SMEV-FL06



SMEV-FL06



SMEV-FL06



SMEV-FL06

VẬT LIỆU VÁCH CABIN, ĐÁ 3D



SMEV-CP03



SMEV-CP04



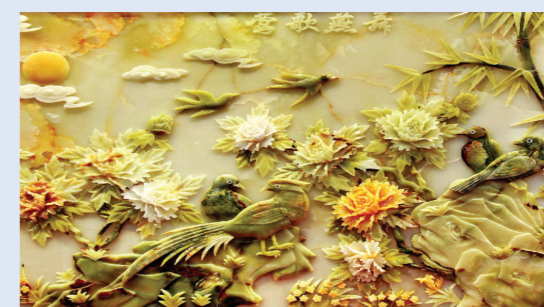
SMEV-CP05



SMEV-CP06



SMEV-CP07



SMEV-CP08



SMEV-COP01



SMEV-LOP01



SMEV-LOP02



SMEV-HIP02



SMEV-HB02

PHÍM BẤM



SMEV-BT01



SMEV-BT03



SMEV-BT03



SMEV-BT04



SMEV-BT05



SMEV-BT06



SMEV-BT07



SMEV-BT08

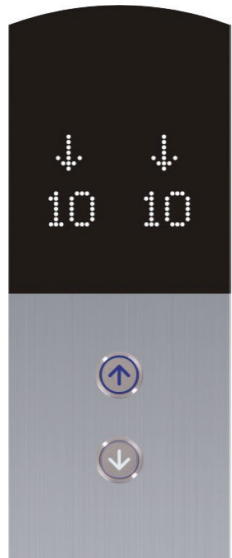
HỘP GỌI THANG



SMEV-COP03

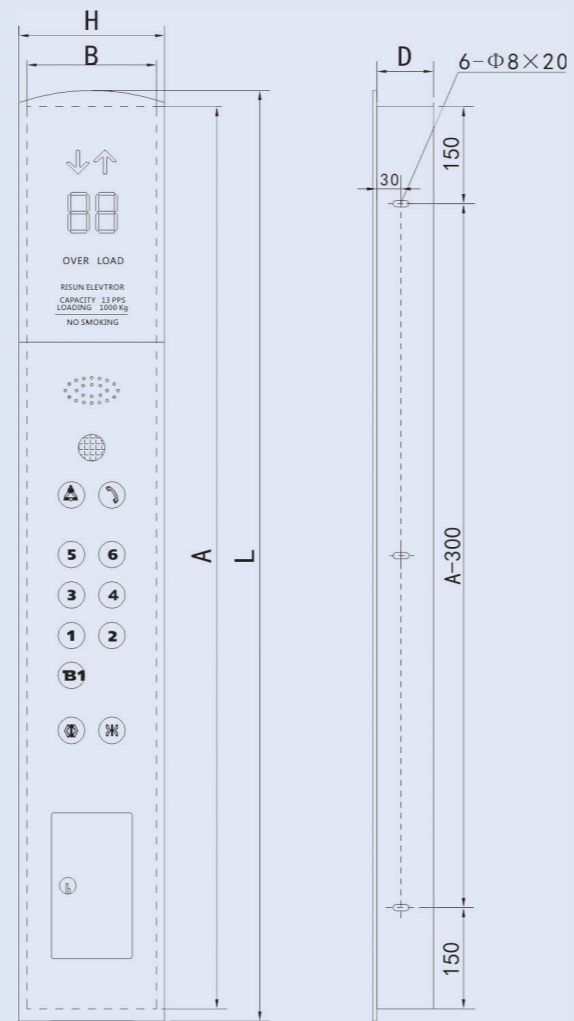


SMEV-LOP04



SMEV-LOP03

KÍCH THƯỚC



THÔNG SỐ

	L(mm)	H(mm)	A(mm)	B(mm)	D(mm)
2-10F	1180	180	1150	157	70
11-20F	1380	180	1350	157	70
21-28F	1580	180	1550	157	70
29-36F	1500	220	1520	197	70

HỘP GỌI THANG



SMEV-COP04

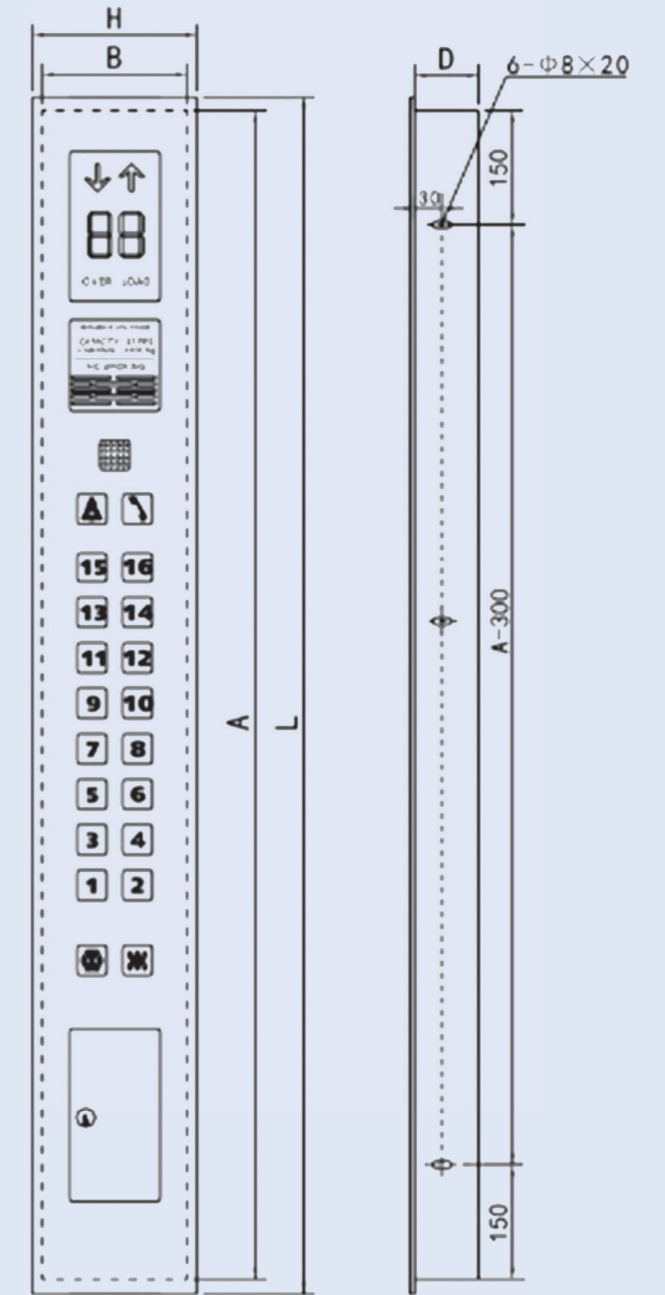


SMEV-LOP05



SMEV-LOP04

KÍCH THƯỚC

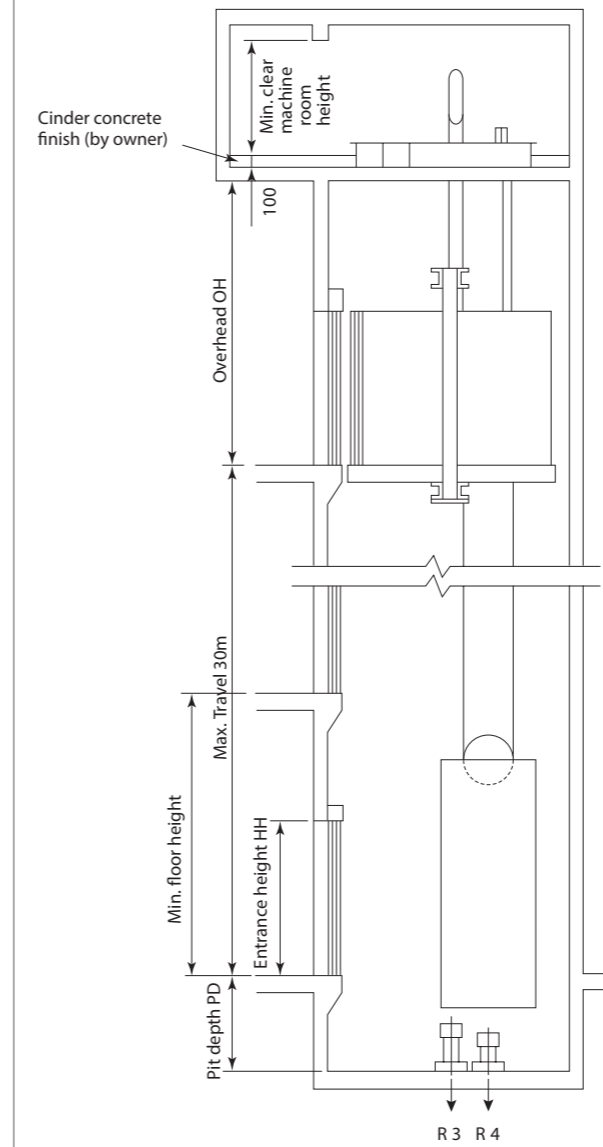


THÔNG SỐ

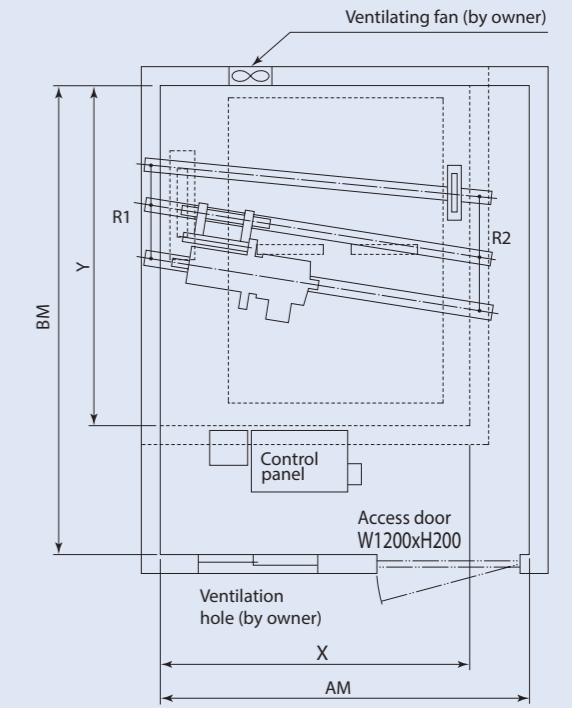
	L(mm)	H(mm)	A(mm)	B(mm)	D(mm)
2-10F	1180	180	1150	157	70
11-20F	1380	180	1350	157	70
21-28F	1580	180	1550	157	70
29-36F	1500	220	1520	197	70



Hoistway Section



Hoistway Plan

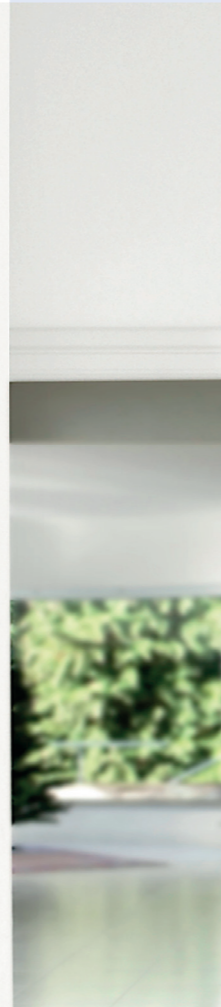


Note:
* Design and specifications are subject to change without notice.
Please contact technical personnel to have the most accurate advice.

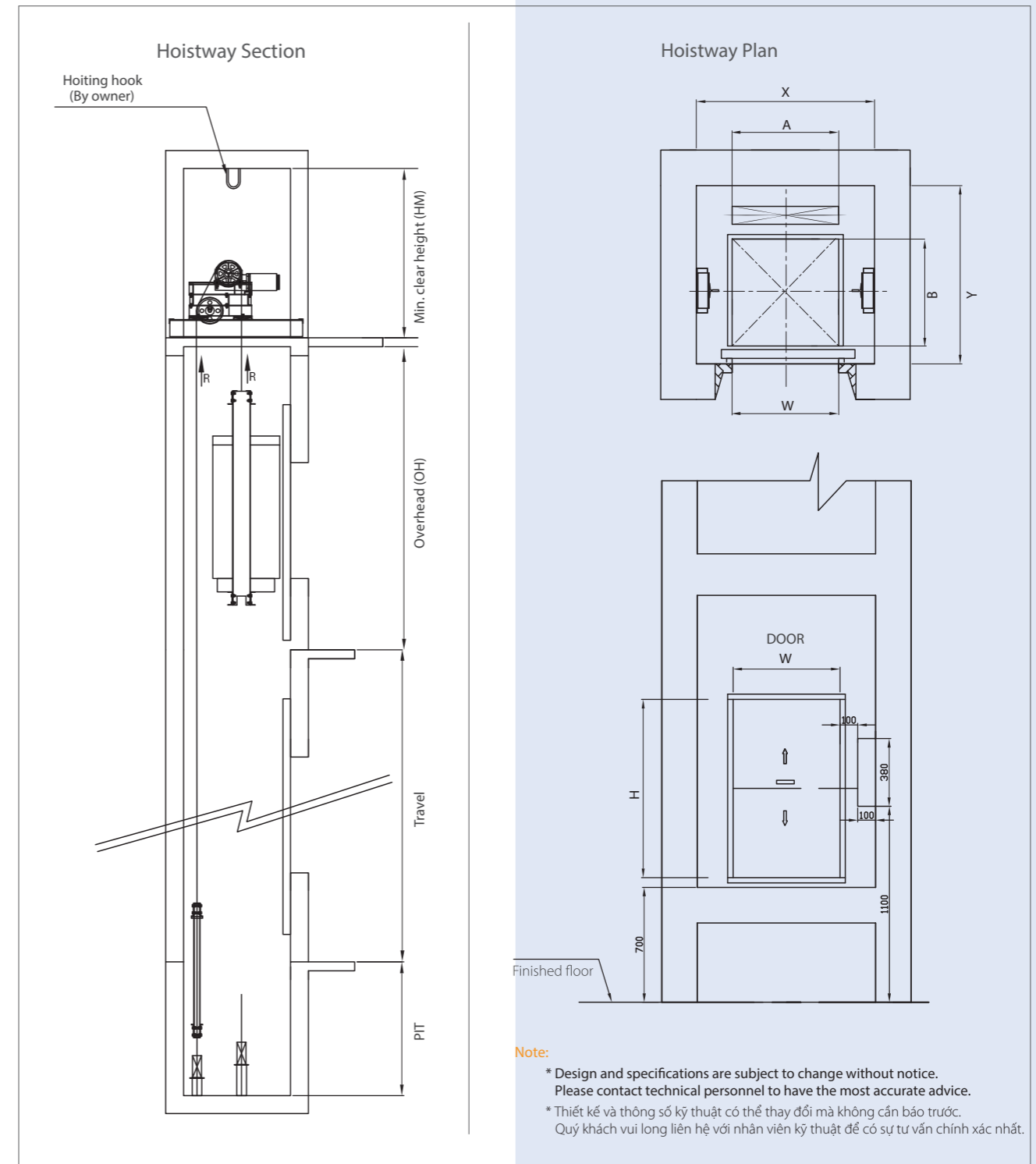
Standard Dimensions (2-panel side opening door)

Type	Capacity (kg)	Speed (m/min)	Motor (kW)	Machine room (mm)	Pit depth PD (mm)	Door type	Hoistway (mm)	Min. floor height (mm)	Overhead OH (mm)	Reaction loads (kN)*2			
										Machine room		Pit	
										R1	R2	R3	R4
F-750-2S	750	45	7.5	2600 x 3950	1250	2S	2200 x 2900	2800	4450	57.9	41.2	70.6	55.4
		60	9.5		4650				71.6			55.4	
F-1000-2S	1000	45	7.5	3150 x 3950	1250	2S	2600 x 2900	2800	4450	74.6	43.1	80.4	66.2
		60	9.5		4650				84.8			73.1	
F-1500-2S	1500	45	9.5	3600 x 4050	1250	2S	3150 x 3000	2800	4450	101	53.9	119.6	82.4
		60	13		4650				129.4			88.3	
F-2000-2S	2000	45	13	3600 x 4250	1250	2S	3150 x 3400	2800	4450	121.6	63.7	139.2	103
		60	18.5		4650				150			109.8	
F-2500-3S		45	18.5	4000 x 4400	1250	3S	3600 x 3700	3300	4850	148.1	81.4	192.2	144.2
		60	22		5050				206			154	
F-3000-3S		45	18.5	4100 x 4800	1250	3S	3750 x 4100	3300	4850	166.7	92.2	208	154
		60	26		5050				223			165	

THANG TẢI THỰC PHẨM



THÔNG SỐ KỸ THUẬT



Standard Dimensions

Type	Capacity (kg)	Speed (m/min)	Entrance (W x H)	Car internal (A x B)	Hoistway			Machine room (AM x BM x HM)
					(X x Y)	OH	PIT	
D100-UD	100	10-15	800 x 1000	800 x 600	1200 x 1000	1800	700	1200 x 1000 x 1200
D150-UD	150		800 x 1000	800 x 800	1200 x 1200	1800	700	1200 x 1200 x 1200
D200-U	200		1000 x 1200	1000 x 800	1400 x 1200	2700	500	1400 x 1200 x 1200
D250-U	250		1000 x 1200	1000 x 1000	1400 x 1400	2700	500	1400 x 1400 x 1200
D300-U	300		1000 x 1200	1000 x 1200	1400 x 1600	2700	500	1400 x 1600 x 1200